



| TEAM | PLAYER | | | | | TOTAL |
|---------------|--------|---|---|---|---|-------|
| | 1 | 2 | 3 | 4 | 5 | |
| Canfield | | | | | | |
| Dublin Jerome | | | | | | |
| Findlay | | | | | | |
| Highland | | | | | | |
| Hudson | | | | | | |
| Jackson | | | | | | |
| Magnificat | | | | | | |
| Perry | | | | | | |
| Stow | | | | | | |
| Walsh Jesuit | | | | | | |

WELCOMES YOU
TO
THE
2010
LADY EXPLORERS'
INVITATIONAL

SATURDAY, SEPTEMBER 11,

BEST OF LUCK TEAMS!

HOSTED BY:
Lake Forest Country Club

330-656-3800
www.LakeForestCC.org



Welcome!

On behalf of Lake Forest Country Club and Hudson High School, we welcome you to the *2010 Lady Explorers' Invitational*.

It is our desire to make this tournament a premier event on everyone's schedule. We have a great many volunteers. Please show them your appreciation throughout the day.

We know the coaches are excited about the match-ups.

We are very proud of our golf course here at Lake Forest, and hope you will enjoy it as much as we do.

Good luck!

John R. Goodson

Head PGA Golf Professional
Lake Forest Country Club

| HOLE NUMBER | YARDS | PAR | HCP |
|--------------|-------------|-----------|-----|
| 1 | 444 | 5 | 5 |
| 2 | 330 | 4 | 3 |
| 3 | 174 | 3 | 13 |
| 4 | 376 | 4 | 1 |
| 5 | 284 | 4 | 11 |
| 6 | 120 | 3 | 15 |
| 7 | 333 | 4 | 7 |
| 8 | 386 | 5 | 17 |
| 9 | 331 | 4 | 9 |
| OUT | 2778 | 36 | |
| 10 | 271 | 4 | 10 |
| 11 | 321 | 4 | 6 |
| 12 | 337 | 4 | 14 |
| 13 | 153 | 3 | 18 |
| 14 | 429 | 5 | 2 |
| 15 | 346 | 4 | 8 |
| 16 | 340 | 4 | 4 |
| 17 | 423 | 5 | 16 |
| 18 | 139 | 3 | 12 |
| IN | 2759 | 36 | |
| TOTAL | 5537 | 72 | |



It is our pleasure to introduce you to
Hudson City School District!

*“The Hudson school community will unite to
empower our students to achieve uncharted
levels of success!”*

The Hudson City School District provides an educational program, pre-kindergarten through 12th grade, which maximizes the intellectual, physical and social and emotional development of each child in a safe and nurturing environment.

With over 5,300 students, we are consistently in the top 1% of school districts in Ohio, with a rating of Excellent, and rank in the top 3% nationally by Newsweek Magazine for Advanced Placement curriculum. Our schools produce graduates with the capacity for success. 95.52% of our students attend four-year colleges.

We have a strong commitment to citizenship, an appreciation of diversity and a desire to help our students make a positive contribution in life.

We are highly competitive at the local, regional and state levels in athletics and we offer a comprehensive music program which includes vocal, jazz, orchestra and a 300-member marching band.

Welcome to Lake Forest Country Club

Opened in September 1930, Lake Forest Country Club is steeped in the history of Hudson. For more than 75 years, friends and family have dined, celebrated, worked and played together on the exquisite Lake Forest grounds.

Nestled among gently rolling hills and mature “old-growth” hardwoods, you’ll find an elegant English Tudor Clubhouse, an immaculately maintained championship golf course, swimming and five Har-Tru tennis courts. Award winning gardens further compliment the breathtaking grounds.

When you think about golf, the 6,749 yard Herbert Strong design offers some of the most challenging play in Northern Ohio. Golfers of all levels find that the course offers a fair test of their game.

Characterized by the standards of “old-course” design, Lake Forest features mature trees that beautifully frame the bent grass fairways. The greens are fast and true, rewarding well executed shots. The professional golf staff conducts lessons and clinics for all skill levels. If you’re a new golfer just learning the basics, or an accomplished player looking to shave a couple of strokes off of your handicap, the staff is there to help.

An active tennis program features league play, couples social matches, lessons and clinics as well.

Members can relax at the swimming pool after a round of golf or a set of tennis – or any time the mood suits. Swimming lessons are offered for Lake Forest’s little members. An active social schedule compliments the world-class facilities offering a variety of events that are sure to please all family members.

If you’re planning a wedding or any other party or event for 50 to 300 people, Lake Forest is the perfect venue.

| TEE | TEAMS | | |
|-----|------------|------------------|------------------|
| 1 | Hudson #1 | Canfield #1 | Highland #1 |
| 18 | Hudson #2 | Canfield #2 | Highland #2 |
| 17 | Hudson #3 | Canfield #3 | Highland #3 |
| 16 | Hudson #4 | Canfield #4 | Highland #4 |
| 15 | Hudson #5 | Canfield #5 | Highland #5 |
| 14 | Findlay #5 | Perry #5 | Jackson #5 |
| 13 | Findlay #4 | Perry #4 | Jackson #4 |
| 12 | Findlay #3 | Perry #3 | Jackson #3 |
| 11 | Findlay #2 | Perry #2 | Jackson #2 |
| 10 | Findlay #1 | Perry #1 | Jackson #1 |
| 9 | Walsh #1 | Magnificat #1 | Dublin Jerome #1 |
| 8 | Walsh #2 | Stow #2 | Dublin Jerome #2 |
| 7 | Walsh #3 | Magnificat #3 | Dublin Jerome #3 |
| 6 | Walsh #4 | Magnificat #4 | Dublin Jerome #4 |
| 5 | Walsh #5 | Stow #4 | Magnificat #5 |
| 4 | Stow #1 | Magnificat #2 | Stow #3 |
| 3 | Stow #5 | Dublin Jerome #5 | |
| 2 | | | |

GENERAL INFORMATION

Restrooms:

Located by #3, #7 and #15 tees.

Yardages:

Sprinkler heads indicate yardage to the center of the green.

Beverage & Snack Stations:

Water and Snacks available at the golf shop.

After Golf:

Pizza and scoring on the Terrace at the club house.

SPECIAL THANKS TO:

Hudson High School Host Coach ~ Doug Snelling
Hudson High School Athletic Director ~ Ray Ebersol

Lake Forest Country Club

Head PGA Golf Professional ~ John R. Goodson
Course Superintendent ~ Thomas Bolon

Program and Publishing

Paul Chapple ~ Catalyx Systems

Lake Forest Country Club welcomes spectators and asks them to register before going on the course. Please register with our staff in the Golf Shop.

Carts are available for spectators. Spectators should remain on the cart paths unless helping search for lost balls. It is recommended spectators stay a half hole away, preferably ahead to help watch balls.

When attending the event, please turn-off cell phones. The team can be penalized if you use your cell phone or if it rings during a match.

While on the course, spectators must not talk to players at any time. Even though a spectator may know a lot about golf, they cannot offer advice to players or make rulings. Only one designated coach is permitted to talk to players at a specified time during a match.

Please allow the coaches to do their job!



EVENT: 18-Hole Stroke Play.

SCORING: LOW FOUR SCORES WILL COUNT FOR EACH TEAM. Ties will be broken by the fifth score, then by team total on the most difficult handicap hole.

Individual Scoring: Individual ties will be broken by the score starting with the most difficult handicap role. There is no stroke limit per hole.

RULES OF THE DAY: USGA rules apply modified as follows:

1. **Summer Rules**
2. **To properly maintain pace of play there will be a stroke limit of double par plus 2.**
3. Embedded ball rule in effect through the green. Rule 25-2.
4. Play is prohibited from prepared areas (e.g. flower beds). Relief must be taken at the nearest point, not nearer the hole, without penalty.
5. Out-of-Bounds: Defined by the nearest edge of the White Stakes at ground level. Holes 3, 4, 5, 6, 7, 8, 9, 10, 11, 12, 14, 15 & 16.
6. Red lines or Stakes: Define Lateral Hazard.
7. Yellow stakes or lines: Define Water Hazard.
8. Hole #4 Defined as a Hazard with a drop area on the hill ahead of the hazard.

WEATHER ALARM

One CONTINUOUS Tone—Play is SUSPENDED

INTERMITTENT Tones—Play may RESUME

All players MUST discontinue play immediately the siren sounds.

Jackson High School, Massilon, Ohio



Nickname: The Polar Bears
Team Colors: Purple & White
Coach: Teal Harvey
Web Site: www.jackson.stark.k12.oh.us/

Magnificat High School, Rocky River, Ohio



Nickname: The Blue Streaks
Team Colors: Blue and White
Coach: Libby McGrath
Web Site: www.magnificaths.org

Perry High School, Massilon, Ohio



Nickname: The Panthers
Team Colors: Black & Gold
Coach: Larry Grovemiller
Web Site: www.perry.net.stark.k12.oh.us/

Stow-Munroe Falls High School, Stow, Ohio



Nickname: Bulldogs
Team Colors: Red and Yellow
Coach: David Dinan
Web Site: www.smfcsd.org/highschool.html

Walsh Jesuit High School, Cuyahoga Falls, Ohio



Nickname: The Warriors
Team Colors: Maroon & White
Coach: Bill Reilly
Web Site: www.walshjesuit.onlinecommunity.com

Hudson High School, Hudson, Ohio

Nickname: The Explorers
 Team Colors: Blue and White
 Coach: Doug Snelling
 Web Site: www.hudson.edu

Canfield High School, Canfield, Ohio

Nickname: The Cardinals
 Team Colors: Red & White
 Coach: Diane McCall
 Web Site: www.canfield.access-k12.org/chs/

Dublin Jerome High School, Dublin, Ohio

Nickname: Celtics
 Team Colors: Green
 Coach: Charles Butcher
 Web Site: www.jerome.dublin.k12.oh.us/

Findlay High School, Findlay, Ohio

Nickname: The Trojans
 Team Colors: Blue & Yellow
 Coach: Scott Grant
 Web Site: www.fhs.findlaycityschools.org

Highland High School, Medina, Ohio

Nickname: The Hornets
 Team Colors: Green & White
 Coach: Mary Becker
 Web Site: www.highlandschools.org

GENERAL RULES:

Play will be governed by USGA and OHSAA rules. Two rules officials will be on the course. If they are not on your hole when a question occurs, coaches are permitted to enforce rules and answer rules questions. If a rules official or coach is not present, play a second ball, record both scores and see a rules official as soon as possible.

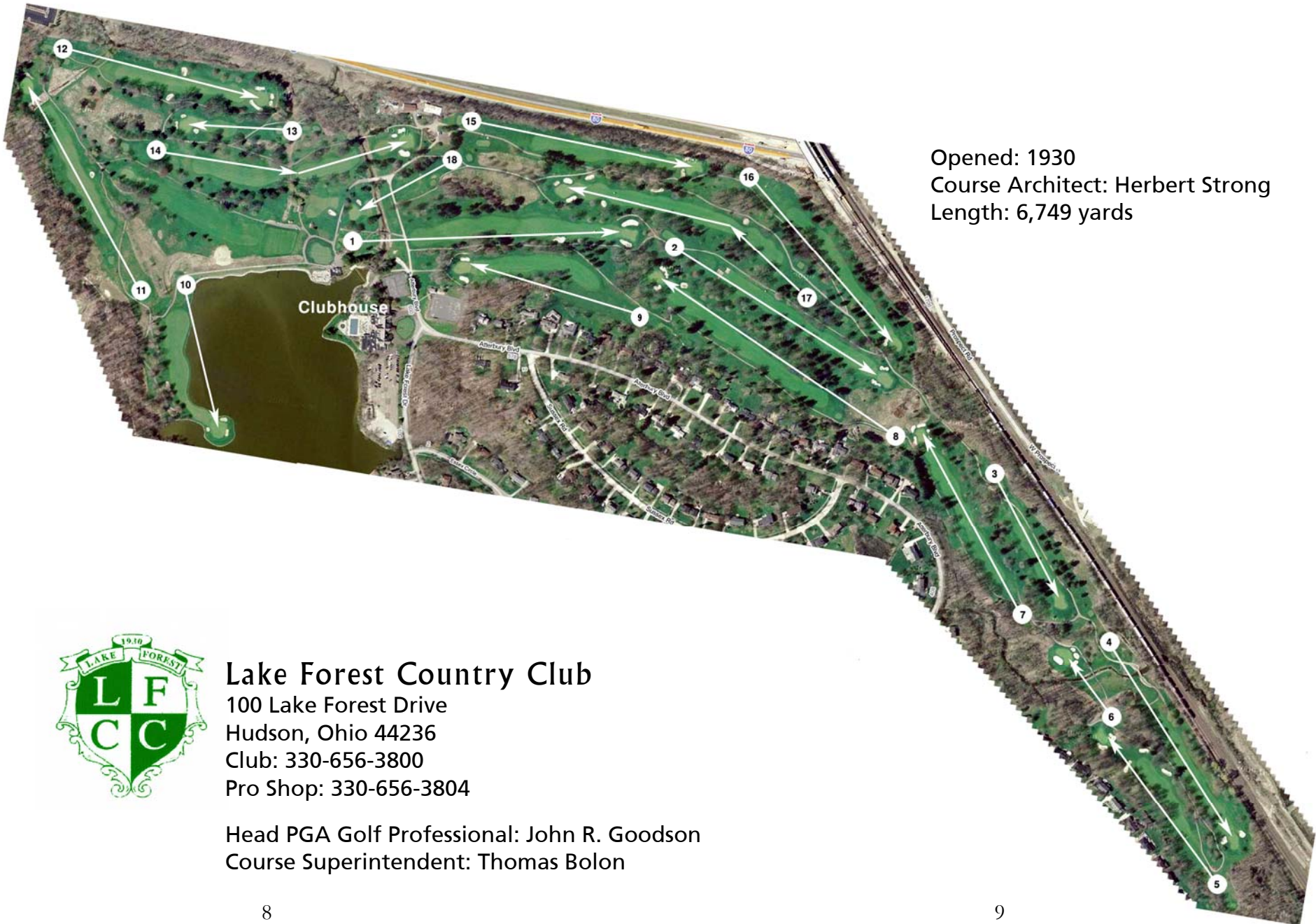
OUTSIDE AGENCIES: Spectators and coaches are considered outside agencies unless they deliberately affect play.

SPECIAL NOTES: Please follow OHSAA guidelines regarding electronic communication, pace of play and coaching limitations.

RULES COMMITTEE

Doug Snelling, Hudson High School

Bill Reilly, Walsh Jesuit High School



Opened: 1930
Course Architect: Herbert Strong
Length: 6,749 yards



Lake Forest Country Club

100 Lake Forest Drive
Hudson, Ohio 44236
Club: 330-656-3800
Pro Shop: 330-656-3804

Head PGA Golf Professional: John R. Goodson
Course Superintendent: Thomas Bolon